

**Graphical Tester for Otoplastics**  
With Bluetooth® Control

Type BLT2017

**Installation instructions  
for Windows 7**

2018

## TABLE OF CONTENTS

<b>1 INSTALLING A BLUETOOTH® LEAKAGE TESTER</b>	<b>3</b>
1.1 Introduction	3
1.2 Before adding your Bluetooth® <i>leakage tester</i> to your computer	3
1.3 Finding and adding your Bluetooth® <i>leakage tester</i>	3
<b>2 INSTALLING THE BLUETOOTH® CONTROL SOFTWARE</b>	<b>5</b>
2.1 Downloading the control software	5
2.2 Software location and unzip	5
2.3 Bringing the software into operation	5
<b>3 TROUBLESHOOTING BLUETOOTH® CONNECTIONS</b>	<b>6</b>
3.1 Common pitfalls	6
3.2 Finding out if you have (built-in) Bluetooth®	6
3.3 Looking up the <i>Bluetooth® serial port</i> number*	6
3.4 Incoming or Outgoing Serial Port*	7
3.5 Control software cannot make a connection	7
3.6 Changing USB ports when using USB <i>Bluetooth®</i> dongles	7
3.7 USB Bluetooth® dongle installation	8
3.7.1 <i>Description</i>	8
3.7.2 <i>Before plugging-in the dongle</i>	8
3.7.3 <i>Getting started</i>	8

\* not relevant when using automatic detection, s/w from v3.00

## 1 INSTALLING A BLUETOOTH® LEAKAGE TESTER

### 1.1 Introduction

This article walks you through the process of adding a Bluetooth® *leakage tester* to your Windows 7 computer, as well as give you some directions to watch out for, so that the process runs smoothly. This guide is intended for installations with software version 3.00 or later

### 1.2 Before adding your Bluetooth® *leakage tester* to your computer

Connect to the Internet if the computer is not already connected. Always check if your Windows 7 is up to date. You might manually check for Windows 7 updates by selecting **Control Panel** in the start menu and then click **Windows Update**. This installation guide is based on Windows 7, Service Pack 1, for both 32-bit and 64-bit systems. If your computer does not already have a built-in Bluetooth® radio you can, instead, use a USB Bluetooth® dongle or micro adapter.

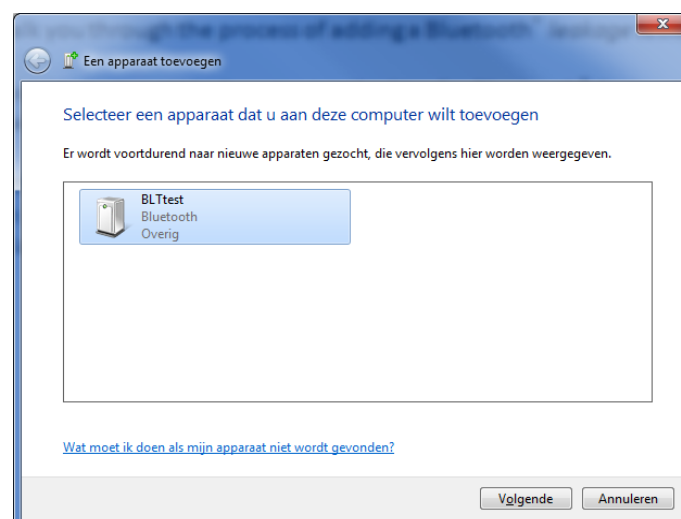
You will find generic information on how to set up a Bluetooth® dongle in §3.7.

### 1.3 Finding and adding your Bluetooth® *leakage tester*

This paragraph describes the process of first finding and then adding a Bluetooth® *leakage tester* to your computer.

There are many ways to instruct Windows to start looking for Bluetooth® devices in its neighbourhood, we used this one:

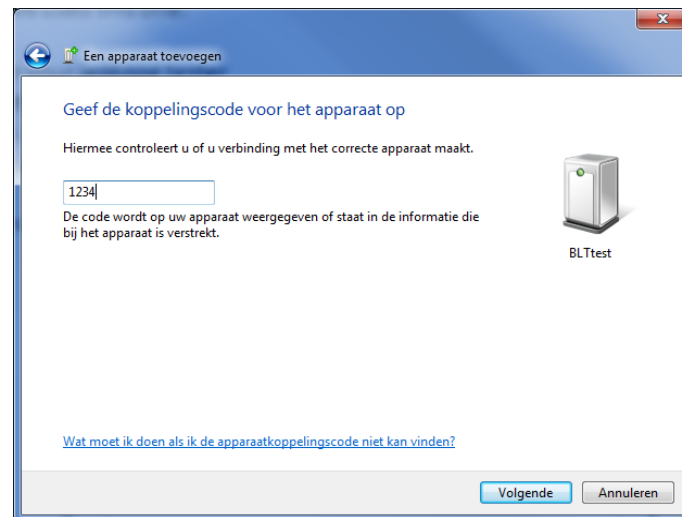
- switch-on your *leakage tester*
- click **Start** and enter the word 'Bluetooth'
- a list with all kinds of Bluetooth® links will show up
- click **Add a Bluetooth device** in the section **Control Panel (n)**
- the following window will show up with (amongst other devices) your *leakage tester*:



- select the *leakage tester* (here with s/n: BLTtest) and click next

With the introduction of the Secure Simple Pairing (SSP) mechanism for testers delivered from 2014, there is no need to enter a pairing code anymore. As implied by the name, this method just works: the tester will be added to your system and you only have to close the window. During this procedure your device will be configured by Windows and after a while will be ready for use.

If pairing is required, than the next window will ask you for a pairing code, your *leakage tester* comes with the pairing code '1234'



- enter **1234**, and click next (if you wait longer than thirty seconds the procedure will terminate, then you'll have to try again)
- after a while your device will be configured and Windows will end the procedure with the message that 'your device has been successfully added to this computer'.

The last thing to do before the hardware installation is complete is to find out through which port Windows wants to communicate with your *leakage tester*. The controlling software (discussed in chapter 2) needs to know this (*serial*) *port number*. You have to determine the port number only one time; because one might want to look up this more often, a dedicated paragraph (§3.3) is available.

As an alternative, in the controlling software versions from V3.00 one has the opportunity to detect and store the port-number automatically.

The whole Bluetooth® installation may take several minutes.

## 2 INSTALLING THE BLUETOOTH® CONTROL SOFTWARE

### 2.1 Downloading the control software

Your dealer will inform you where you can download the software package for your Bluetooth® *leakage tester* from their support section on their website. The *zip*-file name depends on language and version. At this time the *Dutch* version reads **OtoTestBLT3.25\_NL.zip**. Download the file at: [https://www.cursorengineering.nl/?Otoplastiek\\_Testers:Voor\\_Bluetooth:Software\\_Windows\\_BLT](https://www.cursorengineering.nl/?Otoplastiek_Testers:Voor_Bluetooth:Software_Windows_BLT), you may choose another language (English **EN** or German **DE**) if you like.

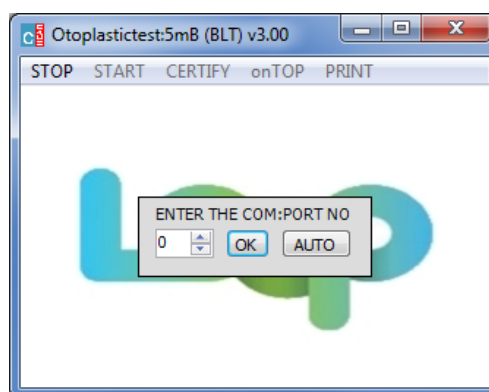
### 2.2 Software location and unzip

The software bundle you are about to install is so-called portable software. This means the software is installed into a directory as a whole and relevant files for running the software live inside this directory. The software bundle doesn't change registries nor writes it to some system directory. Therefore you can install (or, better, unpack) the software to any directory you want and run it from there. So create a new directory where you want the software for your *leakage tester* to reside, e.g. C:\LeakageTester. Transfer the *zip*-file from your download directory to this new folder and unzip it. The application resides in the subdirectory C:\LeakageTester\OtoTestBLTv3.25\_NL and is called OtoTestBLT[.exe]. You may want to create a shortcut on your desktop. If there is a need to control more than one *leakage tester* with the same computer, you can create separate directories for each tester and distinguish between them by choosing different names for the shortcuts.

### 2.3 Bringing the software into operation

Double-click on 'OtoTestBLT' and, *before* the following screen appears, Windows 7:

- might ask you for a **Security Warning** confirmation: *confirm*
- might want you to update the **.NET Framework**: *follow the instructions to upgrade the framework to at least version 4.0, then return to this paragraph (§2.3)*



Click **AUTO** and the software will find your BLT tester and store the port number (in the file COMx.ini) for you. As an alternative enter the number for the *Bluetooth® serial port*; this is *the* number the computer came up with at the end of the installation in §1.3 *Installing Bluetooth® driver software*, (or read §3.3 *Looking up the Bluetooth® serial port number*) and click on **OK**.

**This completes the installation of your *leakage tester* on Windows 7.**

### 3 TROUBLESHOOTING BLUETOOTH® CONNECTIONS


#### 3.1 Common pitfalls

Ideally, adding Bluetooth® devices should be that easy, but there are some "pitfalls" to look out for. Check the following items to troubleshoot Bluetooth® connections:


- make sure that your PC or laptop actually has Bluetooth®, check §3.2 below
- make sure that your Bluetooth® is turned **ON**; any proprietary software might have a switch that enables or disables it
- make sure that your *leakage tester* is powered-on and make sure that the LED power indicator is on (fresh batteries maybe)

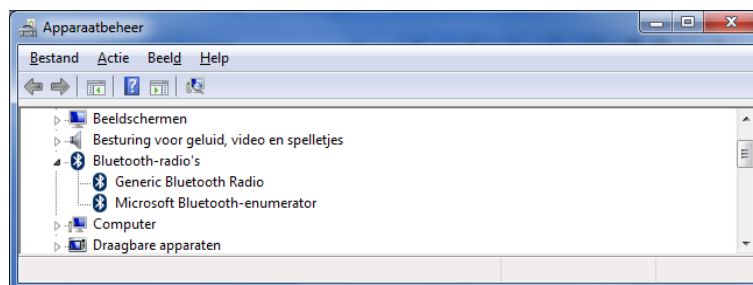
#### 3.2 Finding out if you have (built-in) Bluetooth®

There are many ways to find out whether you have Bluetooth® services available on your computer or not (is my computer Bluetooth-enabled?), we mention two methods here, one:

- check the taskbar at the bottom of the screen to find out if there is a  (Bluetooth®) logo

or, two:


- click **Start** , right-click **Computer**, and select **Properties**
- click **Device Manager** under Tasks
- you should see a section **Bluetooth-radio's** in de device list:



- click the (>) arrow sign next to the **Bluetooth-radio's** section to check that there is any Bluetooth Radio in the list

#### 3.3 Looking up the *Bluetooth® serial port* number\*

The controller software needs to know the *Bluetooth® serial port* number, to find out this number perform the following steps.

- switch-on your *leakage tester*
- click **Start** , click **Devices and Printers**
- right-click your *Leakage Tester* in the section **Devices (n)** and select **Properties**
- click the *Services* tab, after a while, the *Bluetooth® serial port* nr. (e.g. COM5) is revealed
- be sure that the **checkmark** (☑) at the port is checked
- write down this number (here 5) and enter it when the software (chap. 2) asks for it

\* not relevant when using automatic detection, s/w from v3.00

### 3.4 Incoming or Outgoing Serial Port\*

Not very likely, but if Windows 7, at a certain point, wants you to decide between a so called **Incoming** or **Outgoing** 'serial port' always select the **Outgoing** port.

### 3.5 Control software cannot make a connection

If your *Leakage Tester* is visible in the **Devices and Printers** panel in section **Devices (n)**, but the control software is not able to connect to the tester, or the connection is instable, check the following:

- check whether you are using the control software for Bluetooth® testers and not, accidentally, for USB testers
- check the whole Bluetooth® chain, read §3.1 *Common pitfalls*
- when using separate dongles, sometimes the generic Windows 7 Bluetooth driver is not good enough; try to install the micro adapter (dongle) with the software that came with it (CD/DVD-disk), or try to find the appropriate software on the manufacturer's site to build a precisely matching Bluetooth-stack.

### 3.6 Changing USB ports when using USB *Bluetooth*® dongles

When you utilize a USB Bluetooth® dongle (which happens to be removable) you should be aware of the fact that Windows expects to find your *leakage tester* via the dongle **in the very USB port** you **initially** installed your device on. If you remove the dongle and plug it in next time in another port, Windows will re-install it and will, eventually, come up with a different *Bluetooth*® *serial port*-number. In this case, when you start the controlling software, the message (e.g.) 'no tester detected on COM5' will show up. Terminate the control software, now you have two options, one:

- connect the dongle to the original USB port
- resume

As a rule, Windows 7 will re-install the dongle and after a while your *leakage tester* will be available again as described in §3.6 above. Now you can find out the new *Bluetooth*® *serial port* number, which is option two:

- remember this new port number
- in the folder where your control software resides, (C:\LeakageTester\OtoTestBLTv3.25\_NL) you will have to remove the file 'COMx.ini' first
- remove this file
- resume and enter the new port number when asked for

\* not relevant when using automatic detection, s/w from v3.00

## 3.7 USB Bluetooth® dongle installation

### 3.7.1 Description

This chapter will help you adding a separate Bluetooth® USB dongle to your computer in order to be able to connect wireless Bluetooth® devices to your computer. Although there are many different dongles, the setup described in this guide can be applied to most of the Bluetooth® USB dongle models. See below for a photo showing a typical Bluetooth® USB dongle.



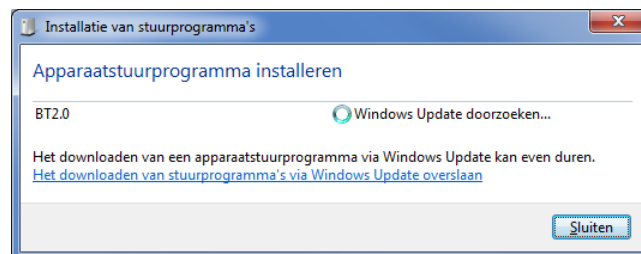
Photo 1.2.1: typical Bluetooth® dongle for USB type A

### 3.7.2 Before plugging-in the dongle

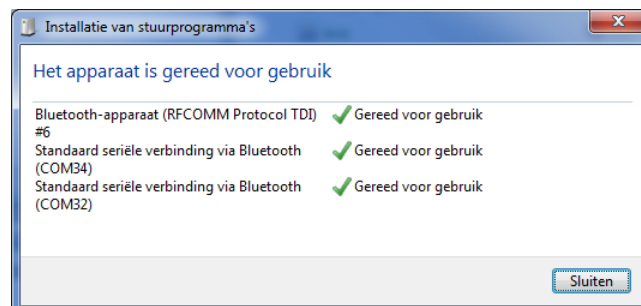
Determine which USB port on your computer you want to connect your *dongle* to. If your computer has USB ports on the front, consider using one of those if you plan to frequently connect and disconnect the dongle although it is a tiny device. **Important:** most dongles remember the USB port they were plugged-in and installed on, read in §3.6 for further information on this issue.

### 3.7.3 Getting started

Plug-in your dongle to the computer's USB port of your choice. Windows 7 should now start searching the internet for specific drivers needed for your device and display a window similar to this one:



Windows will automatically install all the drivers for the different services your dongle is capable of. As a result of a successful installation the accompanying window could look like this:



This window will always look different, depending on your situation, sometimes there might be even some 'failed control items' in the list, you do not need to worry about this. This completes the installation of your Bluetooth® USB dongle.